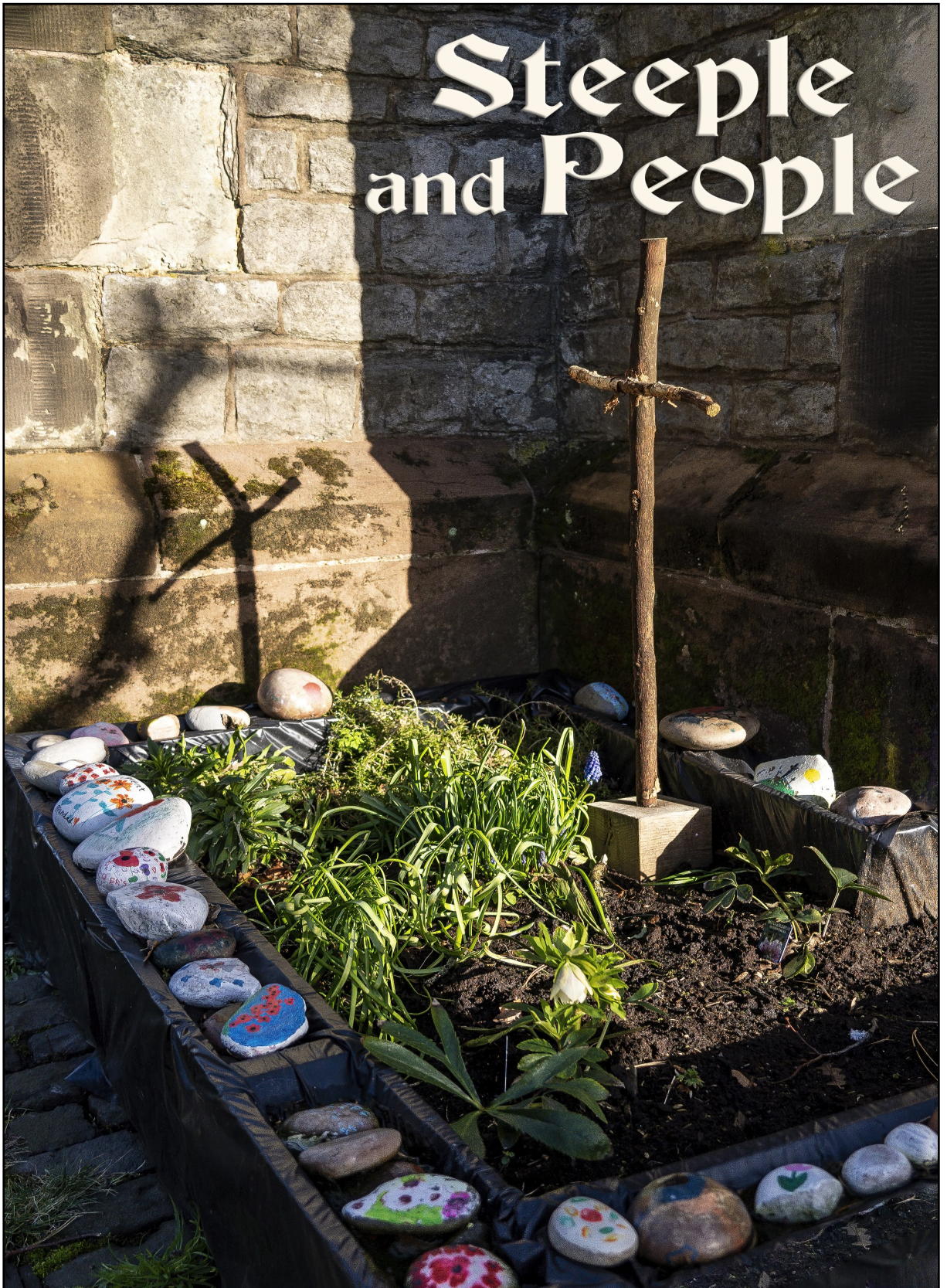


Steeple and People



April 2022

50p



Services

APRIL 2022

Services

3rd April

10.00am Holy Communion
6.00 pm Evening Service

10th April

Palm Sunday

10.00am Palm Sunday Service
3.30 pm Celebrate – Jesus at the Centre
6.00 pm Holy Communion

14th April

Maundy Thursday

7.30 pm Holy Communion

15th April

Good Friday

10.00 am Good Friday Worship for All
2.00 pm Good Friday Vigil

17th April

Easter Sunday

6.00 am Easter Dawn Service
10.00am Holy Communion

24th April

10.00am Holy Communion
6.00 pm Breathe

Plus Night Prayer on Zoom at 8.00pm most Sundays

Thank you to Malcolm Imhoff for the cover photograph this month. Malcolm pointed out that as well as the shadow of the cross on the church wall there is another shadow, of a branch, which looks very much like Jesus on the cross.

Opening Comments

It's been a while since my last opening comment, remembering those sunny October days down in Dorset and I certainly didn't think I'd be writing this sad opening comment. But I cannot ignore the crisis in Europe at this time.



Well into the period of Lent, with the people of the Ukraine defending its streets, I feel very unsettled. The recent and on-going crisis of the war in Ukraine has certainly changed what is usually a quiet and reflective time into a time of the unknown and uncertainty. Russia continues to be aggressive in its pursuit of victory against its neighbour and portrays intent of ever-increasing aggression, with morally questionable tactics and actions on the Ukraine people.

The despot leader Putin seems to be spiralling out of all control, reason and social morality, intent on having his own way come what may. Sacrificing not only the civilian population of Ukraine but in doing so Russian soldiers, many of whom are conscripted and would seem to be enforced pawns in Putin's criminal game of chess. The political and nationalistic arguments are many, with fake news abounding but regardless of any or little justification this action against Ukraine is totally unacceptable and sadly highlights the potential future problems facing Europe and the world.

The pictures of destruction of a European sovereign state only leaves one feeling sad, frustrated and angered. Television and social media news rely on hour by hour accounts of this devastating war with millions of displaced civilians now leaving the Ukraine and fleeing into safer neighbouring countries. Every single person in flight has their own story of hardship, loss and grief; by its nature this war is against human freedoms and has and will produce a legacy of hardship that will last for decades.

Families torn apart and scattered over Europe never knowing when they will be able to see each other again or indeed return to their rightful home. Europe is lending a hand with this humanitarian crisis and Britain is now responding to help and assist these unfortunate people.

It is a war that cannot stay at arm's length like so many distant wars before. We will feel the cold draft of the Ukraine and one prays for the imminent end to Putin's empire building before events overtake and the political domino effect takes hold.

The world has reeled from two years of pandemic to potentially large-scale instability within Europe. Our lives have and will be on hold again as the world recoils and responds to real aggression. Commercial and economical sanctions are being used as a blunt tool against Putin and his cronies but as with all war it's the man, woman and child in the street that will experience the full impact.

Our own government has faced Brexit, then the Pandemic and now a demonstrative Putin unsettling and threatening core stability in Europe and the world. This totally immoral situation seems completely overwhelming. The peacekeepers of the past who fought for stability during the Cold War years and numerous efforts since must be turning in their graves. The world has watched the Russian and Ukraine relationship slowly dissolve over the years and stood by, offering little aid. How long before the West is forced down a political cul-de-sac. Historical lessons of two world wars are seemingly lost to those in leadership.

So, as Christians what can we do? Well, we live in a secular world, 'religious church' has long since lost its close partnership with the 'state' and with it the ability to influence major political decisions. However, God works through those who are held within His freedom of grace, as the religious writer Thomas Merton so eloquently put it "In the old days, on Easter night, the Russian peasants used to carry the blessed fire home from church. The light would scatter and travel in all directions through the darkness, and the desolation of the night would be pierced and dispelled as lamps came on in the windows of the farmhouses, one by one. Even so, the glory of God sleeps everywhere, ready to blaze out unexpectedly in created things. Even so, his peace and his order lie hidden in the world, even the world of today, ready to re-establish themselves in his way, in his own good time – but never without the instrumentality of free options made by free people".

Let's not forget that Jesus's experience of living in an occupied country and the brutality of Roman rule never let it suppress His desire for equality and respect for all. So, we have the teachings and actions of Jesus Christ, to love and help our neighbours, praying for peace, salvation and forgiveness in the situations created by this war. We can give money and clothing to those specific charities and organisations helping the affected and extend a warm loving welcome to those who find themselves landed here in Britain.

Our history is filled with war and strife; we are the result of this continued battling and we have prevailed awful moments of national despair. With this in mind we should step forward as Christians and unite with our brothers and sisters throughout the world in condemnation of Putin's war machine and reach out our arms of loving support for all those affected.

This Lent we need like never before to reflect and pray for the world, its leaders and peacekeepers because it's not the war that will be remembered and define the future but the way we deal with the after affects that will sow the future seeds of rehabilitation, forgiveness and harmony. So, let's stand together with each man, woman and child who suffer, grieve and despair at this sad times, our Lent reflection and prayer is for them.

Gary Connell
Reader St Michael's

PARISH REGISTERS

Funeral Services in Church

Carol Johnson 11th March

Easter Prayer Page.



Jesus Christ is Risen today, Alleluia
Our triumphant holy day, Alleluia
Who did once upon the cross, Alleluia
Suffer to redeem our loss, Alleluia



When we think of Easter day, after the sadness of Good Friday, we remember the joy that the Risen Christ represents – rising and risen. Bringing to us restoration, new life, a fresh start.



In the darkness of our world
Your resurrection brought light.
In the despair of our world
Your resurrection brought hope.
Into the emptiness of our world
Your resurrection brought purpose.
Into the enslavement of our world
Your resurrection brought liberty.
the sorrow of our world
Your resurrection brought joy.
Into the brokenness of our world
Your resurrection brought healing.
Love conquered hatred
and good, evil
and death, life
Amen



Christ's victory over death, gives all who want to follow him and serve him, the chance of a new life, which is beyond price – but that love may come at a cost.

Easter Dawn.

He blesses every love that weeps and grieves
And now he blesses hers who stood and wept
And would not be consoled, or leave her love's
Last touching place, but watched as low light crept
Up from the east. A sound behind her stirs



A scatter of bright birdsong through the air.
She turns, but cannot focus through her tears,
Or recognise the Gardener standing there.
She hardly hears his gentle question, "Why,
Why are you weeping?",
or sees the play of light
That brightens as she chokes out her reply,
"They took my love away; my day is night."
And then she hears her name, she hears Love say
The Word that turns her night, and ours, to day.
Sounding the seasons, Malcolm Guite.



Thine is the glory
Risen, conquering Son,
Endless is thy victory
Thou o'er death has won.

Easter is filled with colour. The dark colours of sadness and sorrow on Good Friday. Easter day bright: the colours of spring flowers, of sunrise, of yellow and gold.

Friday sunset, black and red.
Weep for Jesus Christ is dead.
Sunday sunrise, white and gold.
Christ is risen as foretold.
Lois Rock.



Lord the light of your love is shining,
In the midst of the darkness shining;
Jesus, Light of the World, shine upon us,
Set us free by the truth you now bring us.
Shine on me, shine on me.



As we reflect on Easter, let us share Christ's risen life with rejoicing and happiness – thinking of how we may show this in our lives throughout this Easter season and beyond.

As we reflect on Easter, let us share Christ's risen life with rejoicing and happiness – thinking of how we may show this in our lives throughout this Easter season and beyond.

Ring out the bells!
Shout it from the roof tops!
He is risen, Jesus Christ is risen in glory.
Ring out the bells!
Shout it from the roof tops!

Christ is risen, he is risen indeed,
Alleluia!

HE IS RISEN
alleluia

Wishing you a peaceful and joyous Easter time.
Margaret Wilkinson and Elaine Riley.

PAWS FOR THOUGHT

I stayed up all night to see where
the sun went.

And then it dawned on me!



Why English is So Hard

We'll begin with a box, and the plural is boxes;
But the plural of ox should be oxen, not oxes.
Then one fowl is goose, but two are called geese;
Yet the plural of moose should never be meese.
You may find a lone mouse or a whole lot of mice,
But the plural of house is houses, not hice.
If the plural of man is always called men,
Why shouldn't the plural of pan be called pen?
The cow in the plural may be cows or kine,
But the plural of vow is vows, not vine.
And I speak of a foot, and you show me your feet,
But I give you a boot — would a pair be called beet?
If one is a tooth and a whole set are teeth,
Why shouldn't the plural of booth be called beeth?
If the singular is this, and the plural is these,
Should the plural of kiss be nicknamed kесе?
Then one may be that, and three may be those,
Yet the plural of hat would never be hose;
We speak of a brother, and also of brethren,
But though we say mother, we never say methren.
The masculine pronouns are he, his, and him,
But imagine the feminine she, shis, and shim!
So our English, I think you will all agree,
Is the trickiest language you ever did see.

The Servant King by Graham Kendrick

From Heaven, You came helpless babe
Entered our world, your glory veiled
Not to be served but to serve
And give Your life that we might live

This is our God, The Servant King
He calls us now to follow Him
To bring our lives as a daily offering
Of worship to The Servant King

There in the garden of tears
My heavy load he chose to bear
His heart with sorrow was torn
"Yet not My will but Yours", He said

This is our God, The Servant King
He calls us now to follow Him
To bring our lives as a daily offering
Of worship to The Servant King

Come see His hands and His feet
The scars that speak of sacrifice
Hands that flung stars into space
To cruel nails surrendered

This is our God, The Servant King
He calls us now to follow Him
To bring our lives as a daily offering
Of worship to The Servant King

So let us learn how to serve
And in our lives enthrone Him
Each other's needs to prefer
For it is Christ we're serving

This is our God, The Servant King
He calls us now to follow Him
To bring our lives as a daily offering
Of worship to The Servant King

Source: [Musixmatch](#)

Songwriters: Graham Kendrick

The Servant King lyrics © Thank You Music Ltd., Make Way Music

Graham Kendrick (born 2 August 1950) is a prolific English Christian singer, songwriter and worship leader. He is the son of Baptist pastor, M. D. Kendrick and grew up in Laindon, Essex and Putney. He now lives in Tunbridge Wells and is a member of Holy Trinity with Christ Church, Tunbridge Wells.



Kendrick began his songwriting career in the late 1960s. His most successful accomplishment is his authorship of the lyrics and music for the song, "Shine, Jesus, Shine", which is among the most widely heard songs in contemporary Christian worship worldwide. Kendrick is a co-founder of the March for Jesus. He received a Dove Award in 1995 for his international work. In 2000, London School of Theology and Brunel University awarded Kendrick an honorary doctorate in Divinity ('DD') in "recognition of his contribution to the worship life of the Church". He was awarded another DD in May 2008, from Wycliffe College in Toronto, Canada.

Although now best known as a worship leader and writer of worship songs, Graham Kendrick began his career as a member of the Christian beat group Whispers of Truth (formerly the "Forerunners"). Later, he began working as a solo concert performer and recording artist in the singer/songwriter tradition. He was closely associated with the organisation Musical Gospel Outreach and recorded several albums for their record labels. On the first, *Footsteps on the Sea*, released in 1972, he worked with the virtuoso guitarist Gordon Giltrap.

Kendrick worked for a time as a member of "In the Name of Jesus", a mission team led by Clive Calver. He was based at St Michael le Belfrey, York in the late 1970s and was involved in student and university ministry with British Youth for Christ. At this time he recorded the albums *Triumph in the Air* and *Cresta Run*. Calver went on to run British Youth for Christ and the Evangelical Alliance, and then left the United Kingdom for the Evangelical Church in the United States. Kendrick, however, remained firmly fixed in the UK church as probably the most influential Christian songwriter of his generation.

In May 2020 he took part in The UK Blessing, a worship song video collaboration of 65 churches released during the national coronavirus lockdown.

Advent Retreat at Home, November, December 2021. Part 3.

I hope you enjoyed the first two parts of the Advent Retreat at home. Here is the third and final part.

**Thursday 9th Dec: The Magi – Matthew 2:1-12
When they saw the star they were overjoyed.
Rev Simon Cocks.**



Being the Magi:

We came from the East, heading towards where the star was pointing, for we saw his star, and we knew that a new king had been born. When we approached Jerusalem we made a detour, to see that great city. We also felt that entering a new land protocol dictated a visit and we could ask for advice.

It was difficult to get to see anyone that could help us, we explained to so many officials why we had come, but eventually, we were then granted an audience with the ruler King Herod.

When we asked Herod where the new king was to be born, instead of joy we saw a kind of fear in his eyes. Perhaps getting old he feared his power was waning. Perhaps he feared losing the empire that he had built up, with help from Rome. The people we have seen appeared to be ground down, a new king might fuel an uprising. Once we had made our request he dismissed us, he clearly had things on his mind.

Later, secretly, Herod called us back again. We learnt that he had spoken to his own wise men, who advised him that the new king would be born in Bethlehem, only a stone's throw from where we were in Jerusalem. He told us to go, hunt for the child. He said that he would also like to pay homage to the new king, but we could see in his eyes this was a hollow promise.

We were glad to leave Jerusalem, with Herod, with his promises. But were even more overjoyed when we could see the guiding star confirming the directions from the priests and scribes. This turned to overwhelmed, uncontrollable joy when we could see the star hanging over one particular home in Bethlehem.

When we entered, we could see the light of the star reflected in the child's eyes. It is so hard to explain, but we knelt in homage, complete surrender.

We felt we had to submit with our bodies dealing before this child, so we knelt.

To submit with our minds, giving honour to this child, giving praise to him.

To submit with our wealth, giving gifts fit for a king but more than that: a king expects fine gold, but a king who is divine deserves frankincense, but this divine king appeared so human, frail, and so we gave myrrh.

How this impacts on Christmas?

It is interesting how the Magi took a detour from following the star and entered Jerusalem. Perhaps they thought that they should, as visitors to a new country. It may be that they had heard about the rebuilding that Herod had done and wanted to see the new city buildings. It may be that they needed confirmation, they were unsure of where they were going, looking for reassurance.

We are in the season of Advent; a time of waiting, a time of apprehension, perhaps we are like the Magi, instead of continuing our journey we are prevaricating, making a detour. Or possibly after the long journey we have had over the last 18 months we are looking for reassurance, are we going the right way, or asking for directions.

When the magi reach their destination they give gifts, but more than that, signs. The gifts they give have a bearing on our understanding of who Christ is and will be. And we know those attributes only too well. Gold for a king, frankincense speaks of divinity, as it was used in the temple, and many other religious celebrations. Myrrh that speaks of sacrifice, and the fragility of life.

More importantly, was the way in which the Magi gave these gifts. The passage says that they knelt before Mary and the child, they paid homage.

Homage that speaks of praise, honour, and sacrifice. Homage that speaks of submission. There is something about Christ, human and divine, that insists on our homage.

My favourite part of the Magi story is that they were overwhelmed with joy, joy that could not be contained or explained. I hope in this Advent time, as we retell the story of Christ's birth we will be overwhelmed with joy.



Friday 10th Dec: King Herod – Matthew 2: 3-8 and 16-18 – As soon as you find him report to me. Andrew Menniss

Why did he have to put that in? That's all people remember me for these days, the killing of those children. They forget that they called me Herod the Great for a good reason. Don't confuse me with my idiot son, the one who killed the Baptist. I ruled this place for 37 years, and managed to keep the peace, more or less. I know those children died; collateral damage I think you call it. I've seen your so called civilized 21st Century, I've seen how many children have died in your wars, and famines, and climate emergencies. So don't sit there in judgment of me. I am Herod the Great!

When those dreamy Magi turned up, I knew there would be trouble. I wanted to see for myself, so I said when you find him report back to me. And did they? No. They left me no choice but to snuff this out before things got out of control. I regret it now, course I do. It taught me a lesson. But I think it teaches you a lesson too. And that's why I know now why it's good that Matthew told you all about those poor children; those innocents.

Matthew used to work for me you know. Only as a junior tax collector, but none the less you would expect some loyalty. I've spent two millennia puzzling as to why he put that in. And I think I've finally worked it out. Let me tell you.

As a tax collector Matthew knew a bit about human nature. He knew what you would do to this awesome event of God coming to live on earth.

He knew that your instinct would be to domesticate it, turn it into something sweet and sentimental. He knew that the danger was that you would turn the incarnation of the God who makes the universe into a story that children enjoy and that adults will disbelieve. I blame Luke, he gave you plenty of material for all those syrupy carols you like to sing. Away in a manger no crib for a bed, the little Lord Jesus lay down his sweet head. Ha! Have you ever seen the inside of a cow shed? Filthy and stinking, the cattle don't do much lowing, it's mainly sh.., well you know what I mean. O little town of Bethlehem how still we see thee lie. The place was a mad house, that's one reason why I had to do something. Still is from what I can see. And as far as shepherds watching their flocks, ha, they were usually too drunk to watch anything! No, there's only one carol that tells the truth about how it was and is.

It was written near to you, in Coventry. So with your normal lack of imagination, you call it the Coventry Carol. And it's all about what I did. It's a lament sung as a lullaby, a lament for those poor children who died, and for all who died since. You need to sing it every year because it reminds you that God did not come into a perfect world.

That Jesus didn't do what I expected and was afraid of. He wasn't after power or wealth. It turns out he came to share our suffering, to bear our suffering and to carry us through to resurrection. He came into the real world, it was full of cruelty and wrongdoing then, just as it is now. It's taken me a long time to realise that I was the wrong sort of king. His way of being a king is the only way through this. A suffering servant king. Nothing sentimental about that, it's something we all need to know. That's why Matthew told you all about those innocent children.

*Lully, lulla, thou little tiny child, by by Lully, lulla.
Herod the king, in his raging,
Charged he hath this day
His men of might, in his own sight,
All young children to slay.
Lully, lulla, thou little tiny child, by by Lully, lulla*

Compiled by Elaine Riley.

Friday

We nailed the hands long ago,
Wove the thorns, took up the scourge and shouted
For excitement's sake, we stood at the dusty edge
Of the pebbled path and watched the extreme of pain.

But one or two prayed, one or two
Were silent, shocked, stood back
And remembered remnants of words, a new vision,
The cross is up with its crying victim, the clouds
Cover the sun, we learn a new way to lose
What we did not know we had
Until this bleak and sacrificial day,
Until we turned from our bad
Past and knelt and cried out our dismay,
The dice still clicking, the voices dying away.

Elizabeth Jennings

CMS Link Letter from Azaria, February 2022

Dear lovely family and friends,
As this year begins, my prayer for us all is for God to help us experience more of his peace and learn how to daily live and rest in His presence.



Convivios and candles

Convivio is the Spanish word used here for parties and gatherings, and during the Advent season it is common to be invited to several. Naturally, we organised more than one convivio with the children and youth here at Street Kids Direct Guatemala.

Before Christmas, I got involved with one of these parties for children aged 8-12. There were games, food, pinatas, hot chocolate, plenty of gifts and of course the Christmas story. One of the games I planned was the old classic Pass the Parcel, with an exciting twist. In each layer there was of course a sweet, but in addition a piece of paper referring to a Bible verse that revealed part of the story of Jesus' birth. It was great to see each winner unwrapping a layer of the parcel to find the next bit of the story and then opening the Bible to read it aloud to everyone.

Let's pray that every child and young person who heard the good news through our convivios not only heard, but will share the story with others as God continues to reveal himself to them.

Best of Both Cultures

At Christmas I got to enjoy the best of both worlds, meaning I celebrated, for the first time, a fully Guatemalan Christmas on the 24th, and still got to tuck into a fully British Christmas dinner on the 25th. On Christmas Eve I was invited to share their traditional Christmas with a Guatemalan family and enjoyed wonderful hospitality: we ate a leisurely family dinner of delicious turkey with gravy, rice and salad at around 8 p.m., then went onto the roof terrace to play with cuetes, (small fireworks and firecrackers) and when I say play with, that is exactly what I mean! There we were on the roof, lighting small fireworks and sparklers and throwing firecrackers, while all around us, neighbouring families were doing the same – it was really fun if you ignore the lack of health and safety rules, and truly beautiful. We relished hot drinks once back inside, exchanged small presents, and retired to bed at about 2.30 a.m.

Later on Christmas Day, I was able to join some of my colleagues to celebrate the Day over a much-appreciated British Christmas Dinner, complete with crackers, pigs in blankets, trifle and the Queen's Speech. To top it off, I was able to connect with my family in the UK. God is good.

Please join me in giving thanks for God's goodness and provision, especially of good friends and "family" for me over here.

Anticipation and adventures ahead

I can't wait to see how God will continue to lead us in the work and ministry at Centro Opp, the mentoring centre I coordinate. We are looking to focus on discipleship and helping the young people to learn more about God as we support them in the deepening of their relationships with Him. My head is full of ideas of possible projects and plans. I'm starting to find my feet more in my leadership role and that is exciting for me – it's a privilege to lead a team of passionate people and see the youth taking on more responsibility as they begin to serve others around them.

Please pray for me as I continue to seek God and see what He is doing here as I try to join in with His plan for us. Pray for us as we develop programmes in Central Opp to serve the vulnerable young people, especially that we can all grow in relationship with God, team and youth together.

Thank you for your continued support, love and prayers.
Love and blessings, Azaria xx

PAWS FOR THOUGHT

**EVERY DAY ABOVE GROUND
IS A GOOD DAY**

(From a Chinese fortune cookie)



BUILDERS PLUMBERS
GLAZIERS DECORATORS

B.ROBINSON

& Sons Ltd

GENERAL REPAIRS TO PROPERTY

ESTIMATES FREE

102A COLES LANE, SUTTON COLDFIELD

(opposite Sutton Town Football Club)

0121 354 2946 and 0121 354 5462

READERS' LETTERS

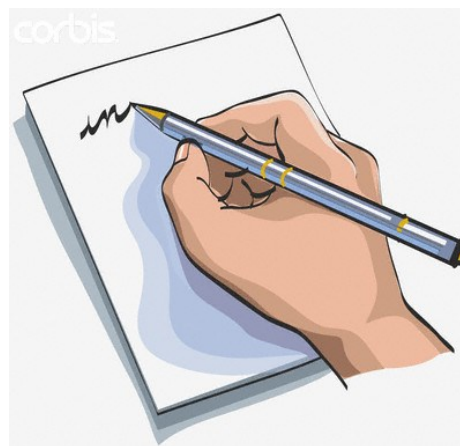
***You** can send letters to my email address:*

***jenningspenny@aol.com** until I get a new*

'magazine address'.

I look forward to hearing from you soon.

The Editor



NEWS FROM MALAWI

The Container sent annually from the Birmingham Diocese to Malawi was considerably delayed on its journey this year: having been despatched on 12th June, it finally arrived in the capital, Lilongwe, for unloading on 24th November. No one seemed to be able to explain what the hold-up had been. We received grateful thanks, as always from the two people who are our main contacts over there – Agnes Mkoko and Jesman Seva.



Agnes works among mothers from a rural area who struggle to bring up their families, due to poor housing, lack of food, and poor health care. She was able to take many items of babywear, as well as sheets, towels and blankets, to the local clinic, where she gave everything out to the mothers of newly born babies. She writes *"The mothers were so happy, as they were not expecting to go home with a present. Most of them often have to dress and wrap their babies in old or unsuitable clothing. We really do appreciate whatever you send to us. May the Lord continue to bless you all at St Michael's."*

Jesman has also written to say that everything sent to him for his school and the local community arrived safely, and he mentioned how much the students will benefit from the gifts of pens, pencils, exercise books and other items of stationery. He also said the tool kits, tool boxes and other materials sent for the design and technology workshop at his school were incredibly valuable to the school, but would also benefit less fortunate children in his community, since he intends to introduce a holiday scheme for local children who are interested in acquiring new skills.



Included in the cases sent to Jesman were lots of clothes for babies and children.

He writes *"The clothes are enough for the two Maternity wards in the local hospital, and we expect to extend the donation to the Paediatric ward because we received some clothes and shoes for 2 to 8 year-old children."*

Thank you very much. Please thank all those who donated these many items for us. This is a memorable gesture that will live long in our hearts. I thank the Vicar and everyone at St Michael's involved. Please never stop praying for us."

~~~~~

Other news from Malawi reached us when we heard that Cyclone Anna had hit the south of the country towards the end of January, causing some loss of life and untold damage, including homes being washed away, in that area.

*Agnes' words were "We thank God that so far things are not too bad for us ..... in my family, it was our outside kitchen, used as a store room, which was damaged and at our little farm house the back wall fell down, crops were wiped out, but thankfully no casualties. It rained for more than two days, and it was truly scary, heavy rains with heavy winds. I have never experienced this in my life, we couldn't sleep, it was terrifying. Further south, many, many people have been displaced, roads are damaged and bridges down. May you continue to remember us in your prayers. God bless you."*

Liz Carr

## H. KEENAN

Memorial Masons  
&  
Sculptors

MEMORIALS  
CREMATION TABLETS  
HOUSE NAMES  
Catalogues and prices sent  
without obligation.

Additional engraving and renovations.  
Quotations on request.

187, Boldmere Road, Sutton Coldfield  
B73 5UL

## Parish Administrator for St Michael's Church, Boldmere

12 hours per week  
Salary £10.37/hour  
To begin mid-May 2022



St Michael's Church is looking for an efficient, reliable, self-motivated and confidential administrator who is good at verbal, written and IT communication who will work with the church team in furthering the mission of St Michael's Church.

Please request an application form and job description from Rev'd Gary Birchall at [garybirchall1@gmail.com](mailto:garybirchall1@gmail.com)  
Job Description and Application form also available from the church website [www.stmichaels.org.uk](http://www.stmichaels.org.uk)

Interviews will take place on Wednesday 20<sup>th</sup> April 2022.  
Deadline for applications is 12.00noon Friday 8<sup>th</sup> April 2022

Please ring Rev'd Gary Birchall on 0121 354 4501 if you would like to enquire further about the role.

### **PAWS FOR THOUGHT**

Life itself is a waiting room.

Good days bring happiness.

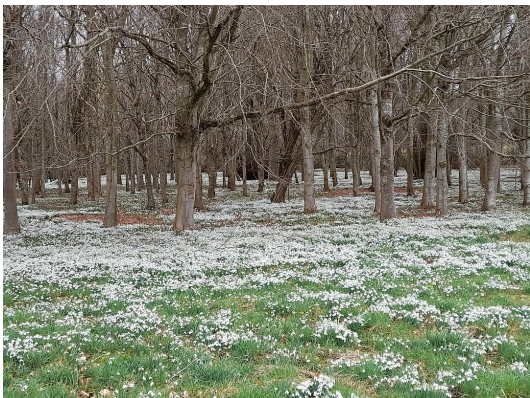
Bad days bring experience.



## An unseasonal attraction?

As I write this, the snowdrops are giving way to the early spring flowers and the purple and white crocuses once again line the path in St Michael's churchyard. One of our pleasures in the past has been to visit gardens that specialise in snowdrops, often only opening just for the month of February while these delightful little flowers are at their best, weather permitting of course! We have seen some lovely collections in previous years but this year we decided to visit somewhere different.

A couple of weeks ago we visited Welford Park in Berkshire which again opens just for the snowdrop season. The grounds are also used for the filming of The Great British Bake-Off. A monastery stood on the site of the present house and Church but was destroyed by Henry V111 in the dissolution of the monasteries. The present house was originally



built around 1652 and remodelled in 1702.

The church, which is sited close to the house, is one of only 2 churches in the county with a round tower and is covered in flint. The attraction for visitors is the 7 acres of snowdrops in the wood, looking as if there has been an overnight snowfall.

While we were walking around the estate, it was difficult not to notice people walking along with bunches of mistletoe. Around the grounds we then saw the bare trees that were full of great balls of the plant. As we visited after a few very windy days, this had obviously resulted in large branches being broken with mistletoe still stuck to them.

I know little about mistletoe except that it is a parasite, feeding off trees and that it has been a part of the Christmas season through history.



This is a little bit of information about the plant.

Mistletoe is the common name for plants in the Santalales or sandalwood order. There are 8 families within this order and close on 1000 species, almost all having some degree of parasitism, attaching to stems or roots of trees. The order ranges from 60ft tall plants to tiny, the stems of the dwarf mistletoe extending less than an inch from the host plant. The plants are either male or female, unlike many plants which are both; the female plants of mistletoe having the white berries.

All these parasitic plants have a specialised organ within the structure which penetrates the tissue of the host tree or shrub. The water-conducting tissues of the host plant are partially fused with those of the parasite so that water and nutrients from the host can be transferred to the parasite. This process does not usually kill the host shrub or tree but it can weaken it. This is a particular problem where economically important plants are grown; eg



cacao, rubber, citrus and other fruit trees. In N.America they particularly attack walnuts and conifers and in the UK mistletoe is mainly seen on apple, hawthorn, poplars and lime. Mistletoe does not grow in the ground but prefers to grow on trees in open areas with lots of light rather than dark woodlands.

Plants in this order have been used in religious and folk customs and rituals throughout history. *Viscum album*, the mistletoe native to the UK was known many centuries before Christ's birth and is used at Christmas in Europe and N. America. Sandalwood was used around 1700 BC in Europe and possibly earlier in Asia. For Hindus, Buddhists, Parsis and Muslims, sandalwood plays an important part in religious practices and customs. It is also used as a source of oil and can be used for wood carving. The Druids believed that mistletoe brought good luck, helping to protect from evil spirits. In Norse mythology it symbolised love, which is thought to be the origin of the custom of kissing under the mistletoe.



This dates back to the 1700s in the UK, the Victorians thinking that it symbolised fertility and romance.



Mistletoe berries are a great source of food for particular birds. Blackcaps and Mistle Thrushes arriving in the UK for the winter love them. They eat the flesh, the sticky berries often sticking to beaks and feathers. The seeds are then deposited on tree branches where they germinate and start growing on a new host, so assuring that future plants will provide food for the birds in the future. The Victorians believed that the seeds would only germinate if they passed through a Mistle Thrush; however research has shown that, although this is not true, the seeds do germinate faster when they pass through a bird's guts. There are some insects which are only found on mistletoe, including the mistletoe marble moth. The berries may be enjoyed by birds and insects but should not be eaten by humans and household pets as they are toxic.

In the UK mistletoe is particularly found in the Midlands and south of England and there is a particularly large population of this plant in Herefordshire and counties close by. Tenbury Wells on the border of Worcestershire, Shropshire and Herefordshire has the title of England's Mistletoe capital, the plant being seen in trees all around that area. It is kept under control to reduce the risk of major damage to the trees but is harvested to provide an economic addition to the area at Christmas time.

Learning a little more about this plant has been interesting but it is probably not one I would be pleased to have if I had a large piece of land.

Angela Grudzinski

## **Still with the spirit of Jim Carr (Football is in our blood or it's as clear as mud).**

Went to my first Mike' away game. Don't get excited Jim, it was only at Sutton Town. Mikes had been drawn against Town in the quarter final of the Walsall Senior Cup. It was an exceptionally cold evening. The game was very high tempo. As soon as the Mikes started to flag, Sutton's full back scored with a low drive. 1-0 at half time. The Mikes kept up the high tempo in the second half. Good goals by Lewis Archer and Alex McSkeane gave the Mikes a 1-2 victory. I knew then that the Mikes had a very special strong team. This carried on the following Saturday with a good 0-2 victory at Worcester City and the next Saturday with a 1-1 draw away at Stourport Swifts, equalising in the 87<sup>th</sup> minute.

Saturday 5<sup>th</sup> February saw the Mikes playing at home against the league leaders, Hanley Town. It was a good crowd and Hanley had brought a good smattering of their own supporters. The game was really exciting. Boldmere had to keep up a very high tempo and they went in front from a Kyle Byrne goal. The visitors were soon on level terms and but eventually the Mikes heads dropped and Hanley went ahead 1-2. Still a good game and the Mikes bounced back in their next game on the following Tuesday, a 1-2 win at Shifnal. A late penalty settling it for Boldmere.

On Saturday 12<sup>th</sup> February the Mikes were due to play Whitchurch Alport. Whitchurch had been drawn away that day in the FA Vase at Coventry Sphinx and ran out 3-4 penalty winners after the match finished 3-3. This is no mean feat for Whitchurch who are now in the last eight of the competition.

Tuesday 22<sup>nd</sup> February saw me at Church Road to watch the Mikes J W Hunt Cup match against Darlaston. The game was 2-1 to the Mikes at half time. Darlaston came out strongly in the second half. You would laugh, Jim, after twelve minutes the floodlights went out on the Warden Road side. They were out for about ten minutes and everyone including the players got thoroughly cold. It's as if Boldmere had gone to sleep from the restart and Darlaston grew stronger. The game ended still 2-1 but I don't know how. The Mikes were in the Semi – Final where they will meet Lye Town, Bewdley Town or the winners of Black Country Rangers v Lichfield City.

Because of the severe floods the following Saturday's match at Bewdley was switched to Church Road then back to Bewdley again where the Mikes ran out 3-0 winners.

The Mikes were now 4<sup>th</sup> in the league table only three points off 2<sup>nd</sup> with four games in hand.

On Tuesday 1<sup>st</sup> March the Mikes played Whitchurch Alport at home. It was a bitterly cold evening. Whitchurch started well but were soon two goals down. Then they had a player sent off for a bad foul and the match ended as a contest. The Mikes scored another goal and it was 3-0 at half time. Whitchurch came out for the second half meaning business. Their hopes faded when Boldmere scored another goal and then Whitchurch had another player sent off. The Mikes eventually winning 4-0. Boldmere are now up to 3<sup>rd</sup>, only goal difference separating them from 2<sup>nd</sup> but with three games in hand.

The following Saturday the Mikes drew 0-0 with Stone away. So they are now 2<sup>nd</sup> in the Midland Premier League with two games in hand. The top team Hanley Town are, 'out of sight' being eighteen points ahead and being realistic the Mikes can only go for second place.

On Tuesday 8<sup>th</sup> March Boldmere played another one of their away games in hand and ran out 2-0 winners. They are now 2<sup>nd</sup> in the league, four points ahead of the 3<sup>rd</sup> placed team.

Saturday 12<sup>th</sup> March saw the Mikes playing Stone Old Alleynians again. This time at home. After a sluggish start the Mikes ran out 3-0 winners. Eight league games to go.

I have looked at the promotion situation and I find it very complicated, but the FA has decreed. The top team definitely gets promoted (which will not be Boldmere). Teams that finish between second and tenth position will be promoted if they win enough games, then there will be play-offs with the bottom teams in the upper leagues. I am completely new to all this. Matches towards the end of the season are brought forward to make room for games that could be played. Then there are the semi finals of the cups that the Mikes are still in. They are playing Bewdley Town on a neutral ground in the JW Hunt Cup and Sporting Khalsa away (despite the exotic name it's only Willenhall) in the Walsall Senior Cup. It will all become apparent as the season ends. Watch this space.

'Come on Boldmere get behind your team'.

**Graham Jennings.**

# COMMERCIAL PROPERTY DONE PROPERLY.

Sales & Lettings, Lease Advisory,  
Property Valuations & much more...

☎ 0121 321 3441

🌐 [www.burleybrowne.co.uk](http://www.burleybrowne.co.uk)

✉ [enquiries@burleybrowne.co.uk](mailto:enquiries@burleybrowne.co.uk)

🐦 @BurleyBrowne

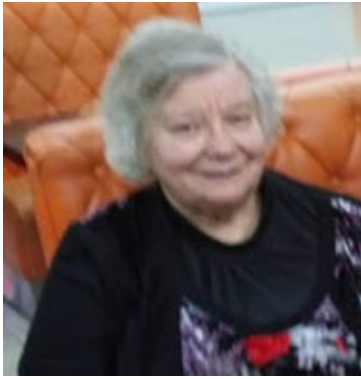
## **THE GUILD AT ST MICHAEL'S**

The Guild has now moved its meetings to Monday afternoons  
2pm-4pm in the Church Hall.

*Everyone welcome — Ladies & Gentlemen  
(Small charge for visitors)*

Our Programme for the next three months will be:

- 4th April - Gardens I have visited by Angela Grudzinski
- 9th May - I K Brunel in Birmingham - Graham Jennings
- 6th June - Celebration of the Queens Platinum Jubilee



## Report for January/February 2022

Dear friends and prayer partners,

Greetings again from the frozen north lands! We've got more snow than I have seen in all the time I've been in Russia. It's warming up now so overnight temperatures are mostly under  $-25^{\circ}\text{C}$ ! The sun shines almost every day and with the snow it appears very bright and the daytime temperatures are around the  $-10$  to  $-15^{\circ}\text{C}$  range. My car is now back in my yard all the time so I can go out whenever I want to! But that still isn't very often! Klavdia had to go to the polyclinic a couple of weeks ago and noticed that everyone was crowded together without masks and no social distancing and coughing etc.

The next day she got Covid! She's had three doses of vaccine, so it was very mild. But it just reinforces the notion that going to the clinic is the last thing on earth I need to do! I've now had my third dose of vaccine and we found a different place where we could book an evening appointment when there were no other clients. The woman also showed us how to get the record into the system and we were able to get the QR code the following day, so I'm covered again and can go shopping wherever! Klavdia had a week off in quarantine, and I missed her very much. So did the cat! Myrra (pictured overleaf) really likes Klavdia and runs to greet her when she hears her approaching the front door of the apartment!

I am now back at the private school, teaching twice a week with about 6 classes there. I also have a couple of students who come to my home in the evenings. I had to go to the dentist yesterday and got two fillings repaired. As a rule I don't like local treatment but this dentist seems very good and I am very happy with her treatment. It's a relief to find someone I can go to here, in case of need! I'm not doing badly – I've got all my own teeth except for one molar I had out when I was 20! [But that left space for one wisdom tooth to replace it!] Not bad for nearly 80, which I will achieve in May! I'm in very good health, generally speaking, and don't catch colds or flu [or Covid!] Some of the parts are showing signs of wear but nothing beyond the usual! And I've even still got all my marbles! [Well, I think so!]

Some people have asked about when I plan to retire. Actually, I'm not making any such plans! I reckon I can grow old and die here just as well as anywhere else! DV, of course!

That means I can continue supporting the work here and facilitating the service of local believers. I also have asked the Boss about plans for the future and who will replace me. I believe He has told me that this is a 'one-off' situation! There won't be a replacement for me when I go and that will mean eventually the work will close down, or 'morph' into some other localised form, like the Newnham House Project. I also believe that His coming is drawing nearer and I've always had a strong conviction that I would see Him coming! Won't that be a great day! I could be wrong – but.

Thank you for making many things possible. We're making a difference, together! Misha, who used to run the rehab centre for alcoholics, is now back and living in the same village, running a church. He has about 15-20 people who attend regularly and we are able to support him a little on a regular basis. We are now providing support in various ways for eight different small churches in various places! You start with children's work – and end up with churches! That's great! Of course, we're still doing the children's work, too. And only God knows all that is being accomplished as a result of the long term work of our team of workers. Pray for them all. Thank you again for your continuing prayers and support for us. God bless you abundantly.

Much love in Him, C Joy McRae



My new cat Myrra, she likes to sleep in the basin because the hot pipes run under the cupboard and make it nice and cosy.

The cat has it made!

Do you want to learn new  
computer skills?  
Or brush up on your old ones?  
Would you like help with using  
new technology?  
Short or long courses available.



Ring Ian Bowden on 07788 733346

## The Made to Measure Woodwork & Decorating Service

A combination of craftsmanship & inspirational ideas

by

**Russell S Harrison C Eng, MIMechE**

0121 - 354 - 3191

07743 - 243413

Now Approved and recommended by



**Accessible and Affordable Professional Counselling  
for the Local Community**

Founded in 1997

**BANNERS  
GATE  
COUNSELLING  
CENTRE**

Do You Need to Talk over a Problem  
In Confidence?

for example

Stress Bereavement Depression Divorce Anger Management Family  
Relationships Dementia Anxiety Childhood Abuse  
Agoraphobia Bullying Flashbacks Social Phobia Survivor of Suicide  
Retirement Difficulties Post Traumatic Stress

**To Find Out More Please Ring**

**0121 354 6544**

**We Welcome Self Referrals**

The Upper Room, St Michael's House, 198 Boldmere Road  
Sutton Coldfield, B73 5UE

[www.bgcounselling.co.uk](http://www.bgcounselling.co.uk)

British Association for Counselling & Psychotherapy 102675 BVSC,  
Registered Charity 1105473 Company Limited by Guarantee 5074677 NCVO



# Groups & Organisations

## MONDAY

|           |                   |             |
|-----------|-------------------|-------------|
| The Guild | 2.00 - 4pm        | Church Hall |
| Contact   | Angela Grudzinski | 373 1899    |
| Cubs      | 6.30 - 8pm        | Scout HQ    |

## WEDNESDAY

|               |                               |              |
|---------------|-------------------------------|--------------|
| Luncheon Club | 12.30pm                       | Church Hall  |
| Contact       | Ruth Yates                    | 354 4248     |
| Rainbows      | 5.00 – 6.00                   | Church Hall  |
|               | stmichaelsrainbows@yahoo.com  |              |
| Brownies      | 6.15 – 7.30                   | Church Hall  |
|               | stmichaels.brownies@yahoo.com |              |
| Contact       | Liz Claybrook                 | 07906 958532 |
| Guides        | 7.00 - 8.30pm                 | Church Hall  |
| Contact       | Hayley Bryer                  | 07876 361952 |
| Email         | hayleydench@hotmail.co.uk     |              |
| Bellringers   | 7.00-8.00pm                   | Church Tower |
| Contact       | Dave Reeves                   | 354 6264     |

## THURSDAY

|               |             |             |
|---------------|-------------|-------------|
| Knit & Natter | 2.00-4.00   | Communithea |
| Contact       | Ruth Murray | 608 3599    |
| Scouts        | 7.30 - 9pm  | Scout HQ    |

## FRIDAY

|                              |                          |              |
|------------------------------|--------------------------|--------------|
| Flower Guild                 | Friday Mornings          | Church       |
| Contact                      | Chris Reeves             | 354 6264     |
| Beavers                      | 6.15-7.30                | Scout HQ     |
| For Beavers, Cubs and Scouts |                          |              |
| Contact                      | Bob Moore                | 07930 543747 |
| Email                        | moorera@blueyonder.co.uk |              |

## CHURCHYARD TALES

The Churchyard has been in the history of this Parish for over 160 years, and has become the final resting place to generations.

Here is one of its stories.....

**Thomas Henry CARTWRIGHT (1857 – 1935)** – aged 78 years

**Harriet Louisa CARTWRIGHT (1867 - 1933)** – aged 66 years

Thomas was born in Birmingham in 1858 and was the son of Caroline and Thomas George Cartwright. Thomas George, although a British Subject had been born in Paris in 1827, 3 years before the Second French Revolution (think 'Les Misérables'). He was a Tin Plate worker who would later go on to become a well-known Tin Plate Manufacturer in Birmingham in his own right. Thomas was brother to Emma Amelia (b: 1852), Caroline (b: 1856) and later Arthur (b: 1864).

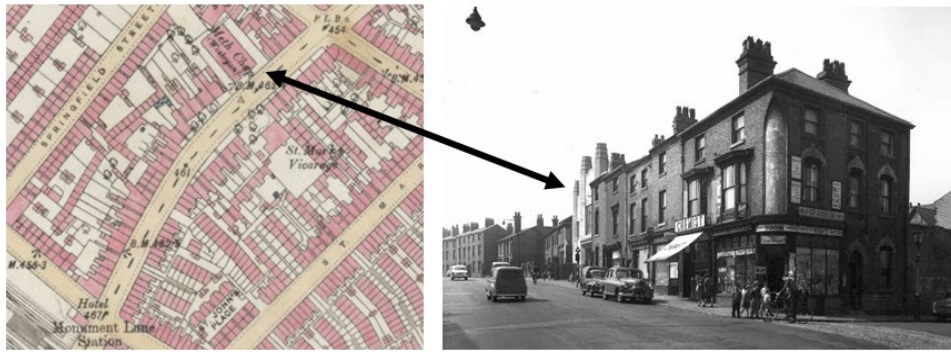
By the time Thomas was 5, the family lived at Clifton Place, Moseley Road, where they lived for some years.

The lack of canals in the area stopped the spread of workshops and factories but the closeness of Birmingham itself made for easy travel and so by the 1860's – 1870's the most affluent had moved from the Moseley area, allowing the area to become more residential and attracting manufacturers and businessmen such as the Cartwright family.



Moseley Village 1870 and Moseley Road Methodist Church built 1872

By 1881, the family had finished their education and begun their working lives. Thomas was a Printer's Clerk, brother Arthur a Pupil Teacher, and sisters Caroline and Emma had become Drapers. The four lived above the Drapers shop premises at 353 Monument Road, Rotton Park/Ladywood, close to a Methodist (Wesleyan) Chapel. Although he retained his links to the Moseley Thomas himself was a Wesleyan.



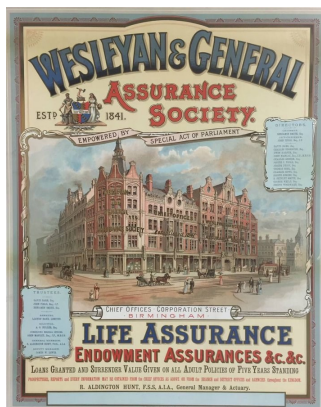
*1890 map of Monument Road and 1950's view with Wesleyan Chapel (white towers)*

Over the years that followed, Thomas continued his progression in the printing trade and in 1884 began his own business; Thomas H. Cartwright Printers in Swan Passage, Birmingham.



Harriet Louisa HUNT was born in Birmingham in 1866 the eldest daughter of Sarah and Richard Aldington Hunt.

*R. Aldington Hunt FSS AIA was for 55 years an employee of the Wesleyan and General Assurance Society based on Corporation Street, Birmingham. Joining the company aged just 15 he rose through the ranks becoming General Manager in 1900. As a Fellow of the Royal Statistical Society (FSS) and Associate of the Institute of Actuaries (AIA) he became well known in Birmingham and through the insurance world at large. It was through his astute business that the W&G went from a small Midlands based company to a National Institution and its assets grew from £1.3 million in 1858 to over £89 million in 1913 at the time of his death. (Assets at present day values).*



In 1881 Harriet who was sister to Florence (b: 1868), Arthur (b: 1873), Elsie (b: 1876) and John (b: 1881) and her parents were living at Arbor Vitae, a house on Chester Road near Holly Lane, Erdington. By the mid 1880's the family had moved to the more affluent Moseley where they lived at The Coach House, 9 Park Road, Moseley. As Methodists, the family most likely worshipped at the Moseley Road Methodist Church nearby. It was here in Moseley that sometime between 1886 and 1887 Thomas met Harriet and they married in Moseley in the Spring of 1888.

Thomas and Harriet lived at 220 Moseley Road and where in 1890 their son Arthur was born, followed by daughter Elsie May in 1893. 220 Moseley Road was demolished in about 1896 to make way for a Quaker Meeting House and as a consequence the family relocated to 'Glenholme' situated on Chester Road, Boldmere near to Chester Road Station, (land which had come up for sale in July 1896). In 1900 their second son Harold was born, making the family complete.



By 1904 the family had moved again and their new home would become 'Heron Lodge' Birmingham Road, Wylde Green. (Heron Lodge was an eleven roomed house situated on

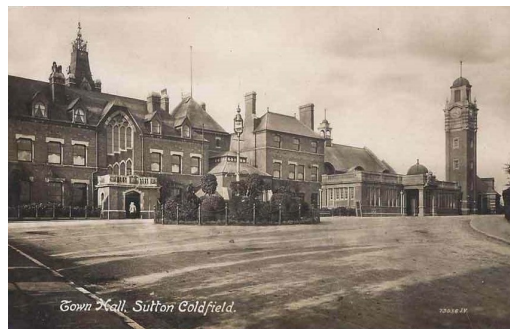
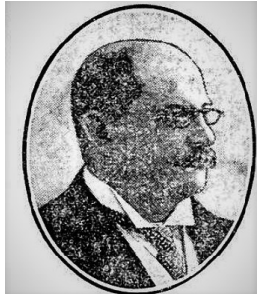
Birmingham Road, directly opposite Little Green Lanes).

The following few years must have been a blur for the Cartwright family and in particular, for Thomas. Throughout his life other than business Thomas had two passions, Sport and Local Government.

Thomas became prominently involved in 'public life' around the same time he moved to Sutton Coldfield (about 1896). His involvement blossomed and in October 1904 he was elected as representative for the Wylde Green Ward of Sutton Coldfield council and in November of that year joined the Town Council. He would become the first chairman of the town planning committee, and hold positions on committees for Finance, Fire Brigade, Housing, Sanitation and Buildings.

**SUTTON COLDFIELD.**  
Five of the six retiring candidates have been re-elected without opposition, and in the place of Alfred Richard Lynex, Thomas Henry Cartwright, printer, of Heron Lodge, Sutton Road, has been elected for Wylde Green Ward. The following are the five retiring candidates who have been re-elected:—  
Maney Ward.—Charles Vale, Deputy Mayor.  
Walmley.—John Hall King.  
Hill Ward.—Thomas Millward.  
Bokmere Ward.—William Henry Bailey.  
Trinity Ward.—Major Dain.

In October 1909 after 5 years in office, he was elected as the 16<sup>th</sup> Mayor of Sutton Coldfield, a position he would hold until 1912.

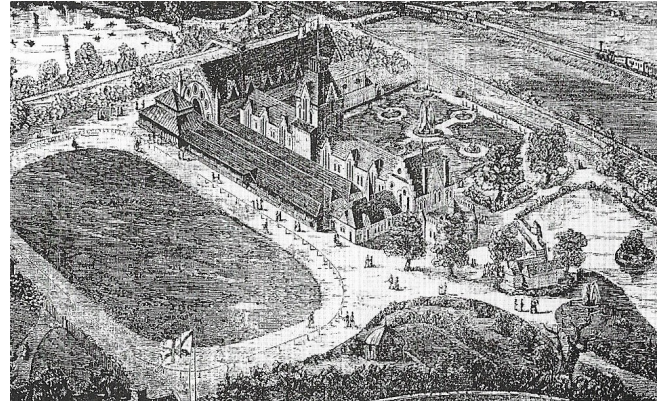


1909 also saw Thomas elected as a Magistrate and he was often seen on the bench at Sutton Court, later becoming chairman of the Licencing Bench.

As far as sport was concerned, Thomas had always been a keen athlete in his younger days. By 1905 Thomas's interest in Birchfield Harriers came to the fore when he attended his first club social. Thomas's support and guidance of the club from that point is now written in the annals of club history as being of 'untold value'.

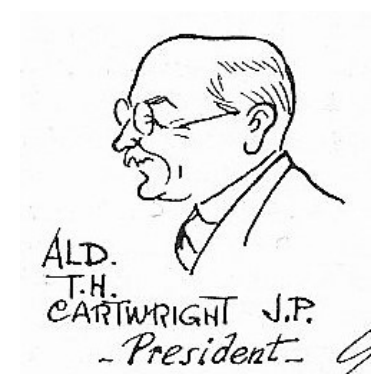
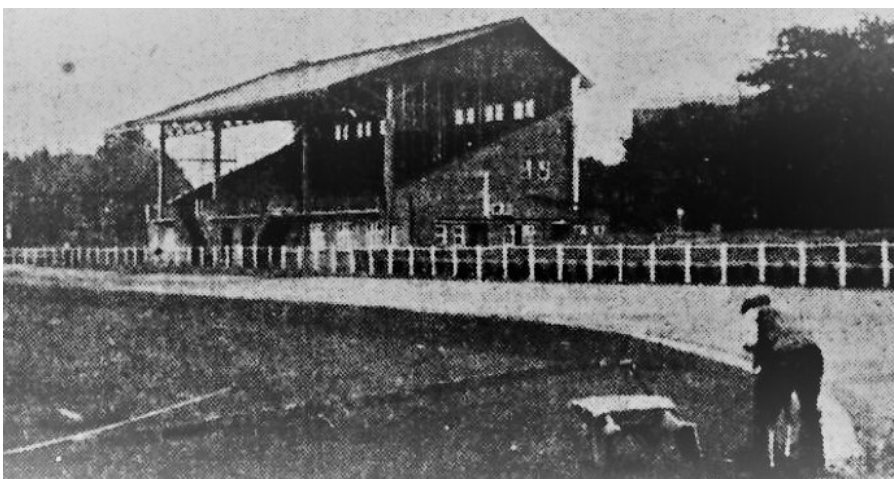
At the Annual General Meeting held in October 1909, Thomas was elected President of the club, a position he would hold for the next 25 years.

Birchfield Harriers had begun life in 1877, and from 1879 began races at what was to become their home on the Aston Lower Grounds, (the site now occupied by Aston Villa Football Club), when a running track and activity building was opened. The club continued to flourish here despite the building of Villa Park which would open in 1897.



*Aston Lower Grounds track.*

Through the influence of Thomas Cartwright, and also William Alexander, during the early 1920's plans were put in place to raise funds for a new development at Perry Barr. The outcome was that on 27<sup>th</sup> July 1929 the '**Alexander Sports Ground**' was officially opened. (W.W. Alexander had been a major influence at the club since he joined in 1880 – the new sports arena at Perry Barr would be named after him).

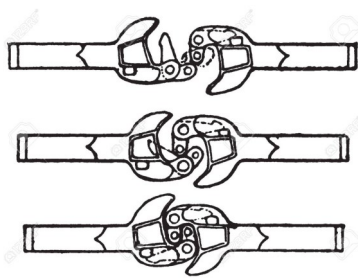


*Preparing for the opening 1929 and caricature of Thomas Cartwright from a cartoon drawn in the Birmingham Gazette.*



*Opening day official photograph at Alexander Sports Ground – 27<sup>th</sup> July 1929*

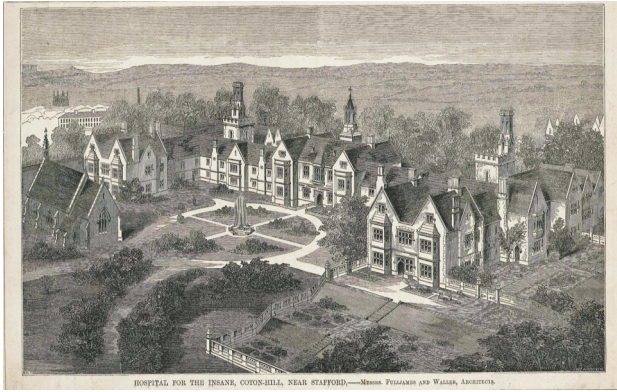
Thomas's work life continued, but not being content with running his printing business, he found time to patent several items. One or two were linked for household use and in about 1916 he invented and patented one of the first designs for automatic coupling of railway carriages; his design however suffered the fate of many other like inventors and never came into public use.



Throughout Thomas's life in local government, he was ably assisted by his wife Harriet who was Mayoress during Thomas's 3 year term as Mayor of Sutton Coldfield.

In later life, Harriet suffered from mental health issues, and was admitted to Coton Hill Hospital, Stafford.

Coton Hill Hospital was a private asylum located in the small village of Coton Hayes situated between Uttoxeter and Stone (1854 – 1976). Coton Hill was also known as The Coton Hill Private Asylum for the Upper Classes and for some women they had private rooms, staff and special diets.



After a long illness over a number of years, during which she was unable to be at Thomas's side, Harriet died at Coton Hill on 18<sup>th</sup> February 1933.

A funeral service for Harriet was held at the Erdington Methodist Church, Station Road, Erdington on 22<sup>nd</sup> February 1933.



The service was attended by representatives of Sutton Town Council, including Town Clerk, Mr Robert Armstrong, R.A. Reay-Nadin, members of the Sutton Coldfield Gardener's Society and many personal friends.

Following the service Harriet Cartwright was interred in the churchyard at St Michael's Church. Thomas continued to live at Heron Lodge, but sold the land during the 1930's development of the area and moved to a house on the newly built Beech Hill Road.

His sons continued the printing business, but Thomas continued his association with Birchfield Harriers and also took up the more sedate game of bowls.

After a period of illness, Thomas died at 'Fairview', Beech Hill Road on 20<sup>th</sup> December 1935, and following a service at Erdington Methodist Church on 28<sup>th</sup> December 1935, attended by family, close friends and representatives from Sutton Town Council, Birchfield Harriers and many organisations he was involved, with he was buried with Harriet in St Michael's churchyard.





***The 2022 Commonwealth Games will be held at the new Alexander Stadium, Perry Barr and around Birmingham from Thursday 28<sup>th</sup> July – Monday 8<sup>th</sup> August.***



Peter Knight

Dear Magazine Readers,

Are you aware that St Michael's Church has had an upgrade with its AV (Audio Visual) equipment? We are now able to live stream the Sunday morning service. If you are unable to attend church in person, would you like to be a part of the service in your own home? There are two ways that you can be part of this.

Email Reverend Gary – on [garybirchall1@gmail.com](mailto:garybirchall1@gmail.com) - and explain that you wish to be placed on the church email system and you will automatically receive the login for the Sunday service.

Facebook: Search for St Michael's Church Boldmere. Apply and wait to be accepted. Once you are accepted you will receive the link to the Sunday service every week.

We hope that you enjoy the services at St Michael's, however you access them.

Elaine Riley.

Visit our website at [www.stmichaels.org.uk](http://www.stmichaels.org.uk)

# Church Hall Lettings

For bookings ring:

Church Administrator 0121 373 0207



Tailing Off....

Hello Again,

We're getting some lovely weather again which is really nice but I hope it doesn't mean that we're in for a poor summer like last year.

Again, thanks to all our contributors. There's some really interesting articles, as usual, in this issue. Without them we wouldn't have a magazine!

Editor

Magazine articles please for the

**MAY**

magazine to:

[jenningspenny@aol.com](mailto:jenningspenny@aol.com)

**By 10th April 2022**

## WHO'S WHO AT ST MICHAEL'S

|                                                                                                                                                                                                                                                                                                                                 |                                                                                                                                                                                                   |          |          |              |            |          |                  |          |             |          |                                                                                                                                                                                                                                                |               |          |                |          |             |          |               |              |
|---------------------------------------------------------------------------------------------------------------------------------------------------------------------------------------------------------------------------------------------------------------------------------------------------------------------------------|---------------------------------------------------------------------------------------------------------------------------------------------------------------------------------------------------|----------|----------|--------------|------------|----------|------------------|----------|-------------|----------|------------------------------------------------------------------------------------------------------------------------------------------------------------------------------------------------------------------------------------------------|---------------|----------|----------------|----------|-------------|----------|---------------|--------------|
| <p><b>Vicar:</b> Rev. Gary Birchall</p> <p>Tel: 354 4501<br/>         Email: garybirchall1@gmail.com<br/>         (off Tuesdays)</p>                                                                                                                                                                                            | <p>209 Station Road<br/>         Sutton Coldfield<br/>         B73 5EL</p>                                                                                                                        |          |          |              |            |          |                  |          |             |          |                                                                                                                                                                                                                                                |               |          |                |          |             |          |               |              |
| <p><b>Curate: Simon Cocks</b></p> <p>Email: simon@wildgoose.me.uk</p>                                                                                                                                                                                                                                                           | <p><b>Readers:</b></p> <p>Elaine Riley                      Tel: 354 4157<br/>         Gary Connell                    07963 510623<br/>         Rob Rolfe<br/>         rob.rolfe42@gmail.com</p> |          |          |              |            |          |                  |          |             |          |                                                                                                                                                                                                                                                |               |          |                |          |             |          |               |              |
| <p><b>Churchwardens:</b></p> <p>Pete Swaine<br/>         Tel: 07846 401334<br/>         Email: peter@swaine.plus.com</p>                                                                                                                                                                                                        | <p>Debbie Tye<br/>         07729923723<br/>         the_tye_family@yahoo.co.uk</p>                                                                                                                |          |          |              |            |          |                  |          |             |          |                                                                                                                                                                                                                                                |               |          |                |          |             |          |               |              |
| <p><b>Lay Pastoral Ministers:</b></p> <table border="0"> <tr> <td>Lin Benson</td> <td>373 1227</td> </tr> <tr> <td>Liz Carr</td> <td>07966 525814</td> </tr> <tr> <td>Kevin Hunt</td> <td>313 2376</td> </tr> <tr> <td>Margaret Smoldon</td> <td>355 4226</td> </tr> <tr> <td>Trudy Walsh</td> <td>355 4128</td> </tr> </table> | Lin Benson                                                                                                                                                                                        | 373 1227 | Liz Carr | 07966 525814 | Kevin Hunt | 313 2376 | Margaret Smoldon | 355 4226 | Trudy Walsh | 355 4128 | <table border="0"> <tr> <td>Peter Edmonds</td> <td>354 3200</td> </tr> <tr> <td>Edwina Connell</td> <td>354 9061</td> </tr> <tr> <td>Fran Lumley</td> <td>354 5490</td> </tr> <tr> <td>Helen Menniss</td> <td>07814 911129</td> </tr> </table> | Peter Edmonds | 354 3200 | Edwina Connell | 354 9061 | Fran Lumley | 354 5490 | Helen Menniss | 07814 911129 |
| Lin Benson                                                                                                                                                                                                                                                                                                                      | 373 1227                                                                                                                                                                                          |          |          |              |            |          |                  |          |             |          |                                                                                                                                                                                                                                                |               |          |                |          |             |          |               |              |
| Liz Carr                                                                                                                                                                                                                                                                                                                        | 07966 525814                                                                                                                                                                                      |          |          |              |            |          |                  |          |             |          |                                                                                                                                                                                                                                                |               |          |                |          |             |          |               |              |
| Kevin Hunt                                                                                                                                                                                                                                                                                                                      | 313 2376                                                                                                                                                                                          |          |          |              |            |          |                  |          |             |          |                                                                                                                                                                                                                                                |               |          |                |          |             |          |               |              |
| Margaret Smoldon                                                                                                                                                                                                                                                                                                                | 355 4226                                                                                                                                                                                          |          |          |              |            |          |                  |          |             |          |                                                                                                                                                                                                                                                |               |          |                |          |             |          |               |              |
| Trudy Walsh                                                                                                                                                                                                                                                                                                                     | 355 4128                                                                                                                                                                                          |          |          |              |            |          |                  |          |             |          |                                                                                                                                                                                                                                                |               |          |                |          |             |          |               |              |
| Peter Edmonds                                                                                                                                                                                                                                                                                                                   | 354 3200                                                                                                                                                                                          |          |          |              |            |          |                  |          |             |          |                                                                                                                                                                                                                                                |               |          |                |          |             |          |               |              |
| Edwina Connell                                                                                                                                                                                                                                                                                                                  | 354 9061                                                                                                                                                                                          |          |          |              |            |          |                  |          |             |          |                                                                                                                                                                                                                                                |               |          |                |          |             |          |               |              |
| Fran Lumley                                                                                                                                                                                                                                                                                                                     | 354 5490                                                                                                                                                                                          |          |          |              |            |          |                  |          |             |          |                                                                                                                                                                                                                                                |               |          |                |          |             |          |               |              |
| Helen Menniss                                                                                                                                                                                                                                                                                                                   | 07814 911129                                                                                                                                                                                      |          |          |              |            |          |                  |          |             |          |                                                                                                                                                                                                                                                |               |          |                |          |             |          |               |              |
| <p><b>Stewardship Secretary</b><br/>         Edwina Connell</p>                                                                                                                                                                                                                                                                 | <p>Tel:                      07717 239904<br/>         Email:<br/>         edwinaconnell@yahoo.co.uk</p>                                                                                          |          |          |              |            |          |                  |          |             |          |                                                                                                                                                                                                                                                |               |          |                |          |             |          |               |              |
| <p><b>Church Administrator</b></p> <p>Liz Claybrook<br/>         Tel: 373 0207<br/>         Email:<br/>         stmichaelschurch-<br/>         boldmere@gmail.com,</p> <p>Mon &amp; Fri 9.30-2.30pm</p>                                                                                                                         | <p>Church Office<br/>         St Michael's Church<br/>         Church Road, Boldmere<br/>         Sutton Coldfield<br/>         B73 5RX</p>                                                       |          |          |              |            |          |                  |          |             |          |                                                                                                                                                                                                                                                |               |          |                |          |             |          |               |              |

# St Martin's Nursing Home



St Martin's is a family run nursing home managed by brother and sister David Underhill (Home Manager) and Lorraine Holt (Nurse Manager). We provide modern facilities for twenty four residents in a comfortable and caring environment. Our small size means individual attention and a homely atmosphere.

Accommodation consists of 24 spacious single bedrooms, all with en-suite facilities, HD television and free Wi-Fi.

We offer a range of enjoyable activities to stimulate cognitive awareness. This includes animal visits, music recitals, puzzles, outings, hobbies and visiting entertainers.

Our professional training is rigorous and our C.Q.C. rating is good. We welcome enquiries and visits should you seek quality nursing care with family values.

51 Vesey Road Sutton Coldfield West Midlands B73 5NR 0121 321 1789  
email [enquiries@st.martins-nursinghome.co.uk](mailto:enquiries@st.martins-nursinghome.co.uk)  
[www.st.martins-nursinghome.co.uk](http://www.st.martins-nursinghome.co.uk)